

UNITED YACHT SALES

“Bonnie Sea”



39' Cruiser Yachts ~ 2003

Builder:	Cruiser Yachts	Fuel Capacity:	300 Gallons
Model:	3970 Express	Water Capacity:	100 Gallons
Type:	Cruiser	Hull Material:	Fiberglass
LOA:	39'	Speed: Cruise / Max:	
Beam:	13'6"	Displacement:	19,575
Draft:	3'	Location:	Myrtle Beach, SC
Engines:	2 x Crusader Captains Choice 8.1 / 425 HP / 332 Hrs / I/B / Gas / 2003		

\$139,000 Asking Price



Earning your trust, one boat at a time

701 North Federal Highway • Suite 301 • Stuart, Florida 34994

772.463.3131 • 772.463.3121

united@unitedyacht.com

INTRODUCTION

Great boat with tons of space. The outdoor living space really makes the boat. The boat has been professionally maintained and the owner has spared no expense in keeping the boat up to date. The owner recently added a new outdoor refrigerator, new high end outdoor carpet, and a new AC unit down below.

She looks great, handles great and is priced to sell.

DETAILED VESSEL WALKTHROUGH

You enter the vessel from the port side on an extra wide swim platform. The cockpit is a split level with the main seating area consisting of a huge wrap around couch, fiberglass table, and wet bar. The helm seat has more than enough room for two and a settee to port. The windshield opens up for easy access to the bow. Down below the salon is massive, with a large lounging area to starboard and galley to port. The master is forward and has its' own bathroom for privacy. Your guests will also have their privacy as well. Both bathrooms have separate shower.

MAIN SALON



L-Shaped Couch & Wood Table

- Nice L-shaped leather couch
- Solid wood table
- Central vacuum system
- Sharp LCD TV
- Clarion Sound System
- Carpet covers

GALLEY

- Two Burner Princess Stove
- Nova Kool Refrigerator
- Nova Kool Freezer



- Sharp Carousel Microwave
- Sink with Cover
- Black & Decker Coffee Maker

MASTER STATEROOM

The interior has the master stateroom forward with separate, ensuite, shower and head. There is a TV/DVD player. The double bed is centerline with easy access from both sides. The shower is to starboard and the head is to port. The heads are Vacu-Flush systems.

Earning your trust, one boat at a time

701 North Federal Highway • Suite 301 • Stuart, Florida 34994

772.463.3131 • 772.463.3121

united@unitedyacht.com

MASTER STATEROOM CONTINUED



Master Stateroom



Master TV/DVD



Head



Shower



Vanity

GUEST STATEROOM

The aft stateroom has a seating area with a table that converts to a double berth. There are privacy curtains that close it off from the main salon. The guest shower and head are to port.



DECK

- Maxwell Electric Windlass
- Bow Mounted Danforth Anchor
- Radar Arch
- Stainless Steel Boarding Ladder
- Two Remote Spotlights
- Swim Platform Shower w/Hot & Cold Water
- Welded Stainless Steel Bow Rails
- Wide Fiberglass Swim Platform w/Lots of Storage

Earning your trust, one boat at a time

701 North Federal Highway, Suite 301 • Stuart, Florida 34994

772.463.3131 • 772.463.3121

united@unitedyacht.com

DECK CONTINUED



Anchor Locker



Windlass



Foredeck



Port Side Deck



Starboard Side Deck



Aft Deck Refrigerator



Aft Deck Dinette



Passenger Seating



Steps

Earning your trust, one boat at a time

701 North Federal Highway, Suite 301 • Stuart, Florida 34994

772.463.3131 • 772.463.3121

united@unitedyacht.com

DECK CONTINUED



Starboard Aft Quarter



Transom



Swim Platform

ELECTRONICS & HELM

- Raymarine C80 GPS/Radar
- Lowrance 3500 Digital Depth Gauge
- Toshiba TV/DVD
- Glomex TV Antenna
- Blaupunkt DVD Player
- Raymarine Ray 53 DSC VHF
- Clarion Marine Sound System w/Remote
- Sharpe Flat Screen TV



Helm Station



Helm Seat

ELECTRICAL

- Hydraulic Engine Room Hatch
- 50 Amp Battery Charger
- Seaward 11 Gallon Water Heater
- Battery Isolator
- New Engine Room Heater



Breaker Panel

- New Batteries
- Fireboy FE-241 Auto Fire Suppression System with Helm Monitor
- CO Detectors
- Xintex Fume Detector

Earning your trust, one boat at a time

701 North Federal Highway, Suite 301 • Stuart, Florida 34994

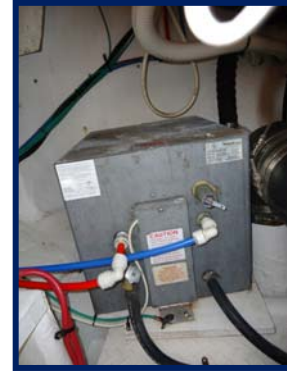
772.463.3131 • 772.463.3121

united@unityacht.com

ELECTRICAL CONTINUED



Fireboy



ENGINE DETAILS & MECHANICAL EQUIPMENT



Engine

- Just serviced & regularly maintained
- 2 Crusader 8.1 with 332 hours
- 10 kw Kohler Generator with 216 hours
- Boat Safe engine room heater



Generator

DISCLAIMER

The Company offers the details of this vessel in good faith but cannot guarantee or warrant the accuracy of this information nor warrant the condition of the vessel. A buyer should instruct his agents, or his surveyors, to investigate such details as the buyer desires validated. This vessel is offered subject to prior sale, price change, or withdrawal without notice.

Earning your trust, one boat at a time

701 North Federal Highway, Suite 301 • Stuart, Florida 34994

772.463.3131 • 772.463.3121

united@unitedyacht.com