

UNITED YACHT SALES

“Triple Trouble”



35' Triton ~ 2007

Builder:	Triton	Fuel Capacity:	355 Gallons
Model:	351	Water Capacity:	25 Gallons
Type:	Express Cruiser	Hull Material:	Fiberglass
LOA:	35'	Draft:	2'
Beam:	10'	Displacement:	11,300 LBS
Engines:	3 x Mercury Verado / 250 HP / 84 HRS / O/B / Gas / 2007		
		Location:	Myrtle Beach, SC

\$139,900 Asking Price



Earning your trust, one boat at a time

701 North Federal Highway • Suite 301 • Stuart, Florida 34994

772.463.3131 • 772.463.3121

united@unitedyacht.com

INTRODUCTION

I LOVE THIS BOAT! This thing is step up and ready to go. There is enough storage and electronics on this Triton to go trolling off the coast of Africa. This is the best of both worlds. A great family boat that fishes and a great fishing boat with Express Comfort.

DETAILED VESSEL WALKTHROUGH

You can enter the vessel easily from the stern or either side. Boarding from the stern you pass through the transom door located on the port side. Centered on the transom wall is a fold down cushioned couch with back rest. The transom also houses the bait station with a removable fish box directly underfoot. Going forward you encounter the massive helm station with double helm seat. Due to the size of the helm all the electronics, generator, and batteries are very easy to work on. An L-shaped couch in front of the helm adds even more seating. Entering the cabin the electric panel and galley station are to port. To starboard is the enclosed head with pull out faucet and Corian countertop and sink. The forward V-berth converts into a dinette with a deck hatch over the table providing ample natural light. There is also a mid berth closed off with a privacy curtain.

MAIN SALON



Dinette

- Cabin Rod Racks
- Teak and Holly composite flooring
- Toshiba 15" TV/DVD combo at head of berth
- Enclosed head
- Vacu-Flush Head
- CO Detector
- 7000 BTU Cabin AC



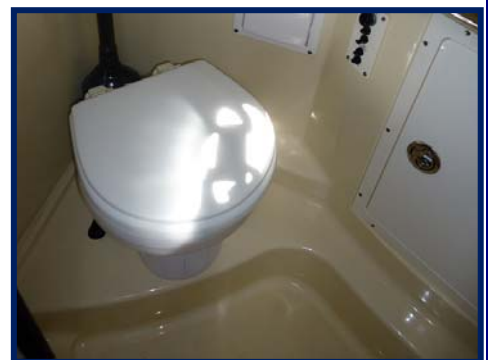
Dinette Down



Master Berth



Vanity



Head

Earning your trust, one boat at a time

701 North Federal Highway • Suite 301 • Stuart, Florida 34994

772.463.3131 • 772.463.3121

united@unitedyacht.com

GALLEY



Galley

- Corian countertop with molded sink matching bathroom
- Chrome faucet
- 2 wood grain cabinets above counter
- 1 burner electric/alcohol stove with butcher's block cover
- Stainless refrigerator/freezer

DECK

- 27 Rod holders in all
- 11 Rocket Launchers mounted to Hardtop
- 6 Rocket Launchers mounted to Transom wall
- 6 Rod holders mounted into Gunnel
- 4 Rod holders mounted into back of Helm chair
- Port and Starboard Molded Rod Lockers
- Taco Grand Slam Outriggers mounted to Hardtop



Foredeck Aft

- Hardtop Enclosure
- Hardtop Spreader Lights
- 56 Quart Cooler
- 21 Gallon Livewell with Light
- 220 Quart Transom Fishbox
- Tackle Boxes beside and on back of Helm
- Lewmar Pro Series Windlass with Remote
- Polished Stainless Plow Anchor



Anchor



Anchor Chain



Foredeck



T-Top



Port Side Profile



Stern

Earning your trust, one boat at a time

701 North Federal Highway, Suite 301 • Stuart, Florida 34994

772.463.3131 • 772.463.3121

united@unitedyacht.com

DECK CONTINUED



Dual Mounted Rod Locker



Tackle Center Open



Tackle Drawers



Tackle Storage



Fishbox



Steps



Transom Bait Station



Seating



Pull-down Bench Seating



Removable Fishbox



Fresh Water Wash Down

Earning your trust, one boat at a time

701 North Federal Highway, Suite 301 • Stuart, Florida 34994

772.463.3131 • 772.463.3121

united@unitedyacht.com

DECK CONTINUED



ELECTRONICS & HELM

- 2 x 10" Northstar 6100i Split Screen Plotters
- Northstar Wide Array Radar
- 2 x Icom IC-M504 Submersible VHF Radios
- Ritchie Powerdamp Compass
- JBL MBB-218 Marine Stereo
- JBL MCDC100-2 6 Disc Changer



- MP3 Player Input
- JBL Stereo Controls on helm
- Jabsco Remote Spotlight
- Trim Tab Indicators
- 6 White/Red LED Lights in cockpit
- Mercury Smart Craft Instrumentation
- Mercury DTS Digital Controls

Engine Controls



Helm Station



Helm Seat



Northstar



Navico Satellite Weather



Switches

Earning your trust, one boat at a time

701 North Federal Highway, Suite 301 • Stuart, Florida 34994

772.463.3131 • 772.463.3121

united@unitedyacht.com

ELECTRICAL

- 120 volt AC Panel
- 2 x 30 amp Power Cables
- TV Cable
- 4 Interstate Batteries 800 CCA/ 1000 MCA
- Rotary Battery Switches with Parallel Switch
- Triton Addition PS4 Battery Charger
- Origo 2500E Alcohol-Electric 1 burner Stove
- Tappan Microwave
- Isotherm 1004902 12/24 volt Refrigerator/Freezer
- 4 GPM Raw Water Wash down Pump
- 6 gal. Electric Water Heater



Triton Addition PS4 Battery Charger



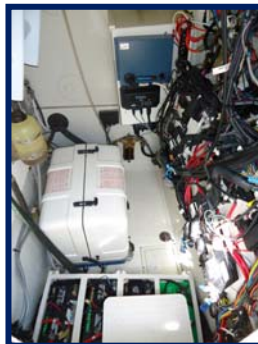
4 Batteries



Electric Water Heater



Generator with Cover Off



Generator with Cover On

ENGINE DETAILS & MECHANICAL EQUIPMENT



- Triple Mercury Verado Supercharged 250 Four Stroke Engines
- Mercury Smart Craft Controls
- Edson Hydraulic Steering with knob
- Fischer Panda 6.0kw P6000MDPMS Diesel Generator

DISCLAIMER

The Company offers the details of this vessel in good faith but cannot guarantee or warrant the accuracy of this information nor warrant the condition of the vessel. A buyer should instruct his agents, or his surveyors, to investigate such details as the buyer desires validated. This vessel is offered subject to prior sale, price change, or withdrawal without notice.

Earning your trust, one boat at a time

701 North Federal Highway, Suite 301 • Stuart, Florida 34994

772.463.3131 • 772.463.3121

united@unitedyacht.com